



# XingYue Communication Technology Co., Ltd.

**Product Name: Panel Antenna**

**Product Model: XY121609**

Electrical Specifications		
Frequency Range	698-960MHz	1710-2700MHz
Polarization Type	$\pm 45^\circ$	
Gain	8dBi	10 dBi
VSWR	$\leq 1.7:1$	
Horizontal Beamwidth	$65^\circ \pm 10^\circ$	$65^\circ \pm 10^\circ$
Vertical Beamwidth	$65^\circ \pm 10^\circ$	$35^\circ \pm 5^\circ$
PIM (2*33dBm)	$\leq 117$ dBm	
Front-to-back Ratio	$\geq 18$ dB	
Input Impedance	50 $\Omega$	
Max Power	100W	
Lightning Protection	DC Ground	
Mechanical Specifications		
Connector Type	2*N Female	
Dimensions (L*W*H)	400*330*130mm(15.7 *13.0*5.1in)	
Radiating Element Material	Aluminum	
Reflector Material	Aluminum	
Weight	4.5kg	
Radome material	UPVC	
Radome Color	Grey	
Mounting Pole	$\phi 40 \sim 65$ mm	
Max Wind Velocity	200 km/h	
Operating Temperature	$-40^\circ\text{C} \sim 60^\circ\text{C}$	

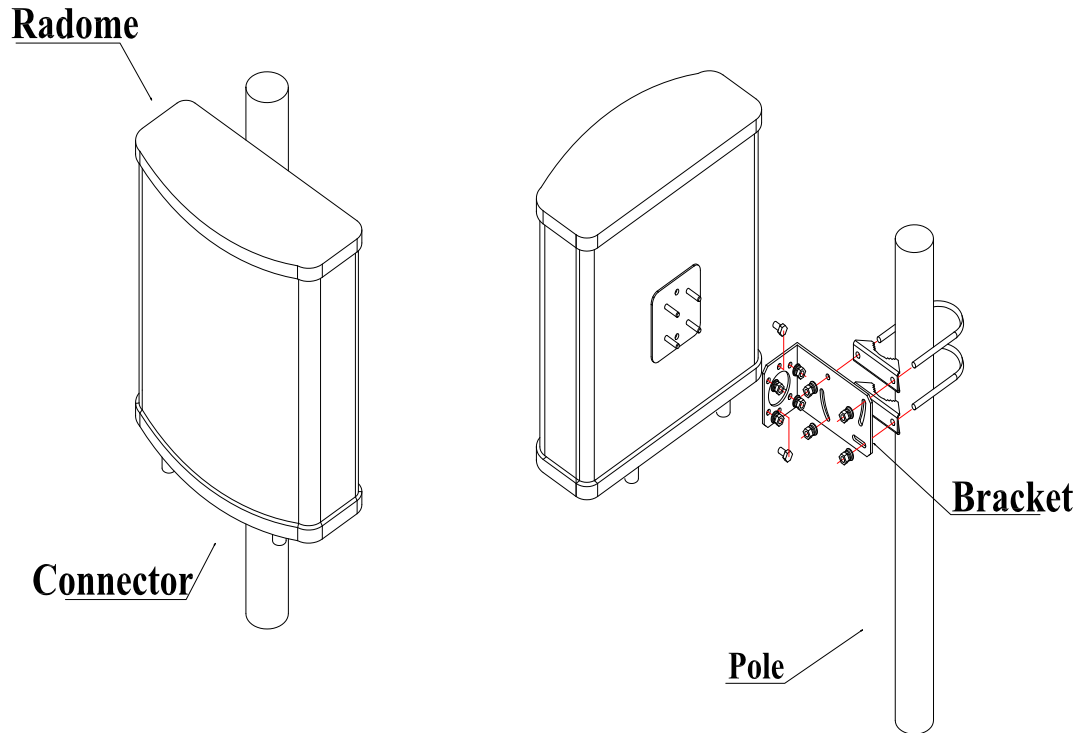


**Add:**No.11 GuangMing new RD, DongCheng area, DongGuan City,China  
**Tel:** +86 - 769-22333955 **Fax:** +86 - 769-2200020  
**E-mail:**xingyue@xytx86.com **Website:**<http://xytx86.com>

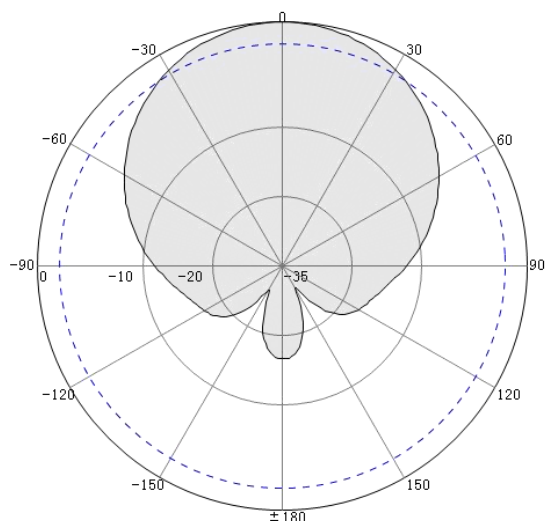


# XingYue Communication Technology Co., Ltd.

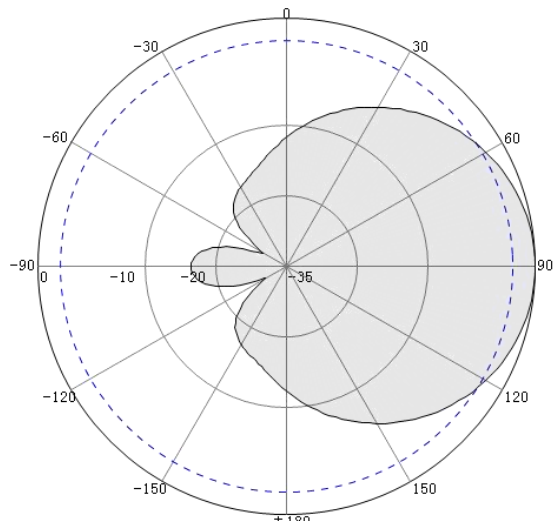
## Installation Guide:



## Directional Pattern:



Horizontal Pattern



Vertical Pattern