



XingYue Communication Technology Co., Ltd.

Product Name: Panel Antenna

Product Model: XY121701

Electrical Specifications	
Frequency Range	1710-2700MHz
Polarization Type	$\pm 45^\circ$
Gain	18 ± 1 dBi
VSWR	$\leq 1.5:1$
Horizontal Beamwidth	$65^\circ \pm 8^\circ$
Vertical Beamwidth	$8^\circ \pm 2^\circ$
Front-to-back Ratio	≥ 28 dB
PIM (2*33dBm)	≤ -107 dBm
Isolation	≥ 28 dB
Input Impedance	50 Ω
Max Power	100W
Lightning Protection	DC Ground
Mechanical Specifications	
Connector Type	2*N Female
Dimensions (L*W*H)	1100*160*80mm(43.3*6.3*3.1in)
Radiating Element Material	Aluminum
Reflector Material	Aluminum
Weight	4.5kg
Radome Material	UPVC
Radome Color	Gray
Mounting Pole	$\Phi 45 \sim 65$ mm
Operating Temperature	$-40^\circ\text{C} \sim 60^\circ\text{C}$
Max Wind Velocity	200 km/h



Add: No.11 GuangMing new RD, DongCheng area, DongGuan City, China
Tel: +86 - 769-22333955
E-mail: xingyue@xytx86.com

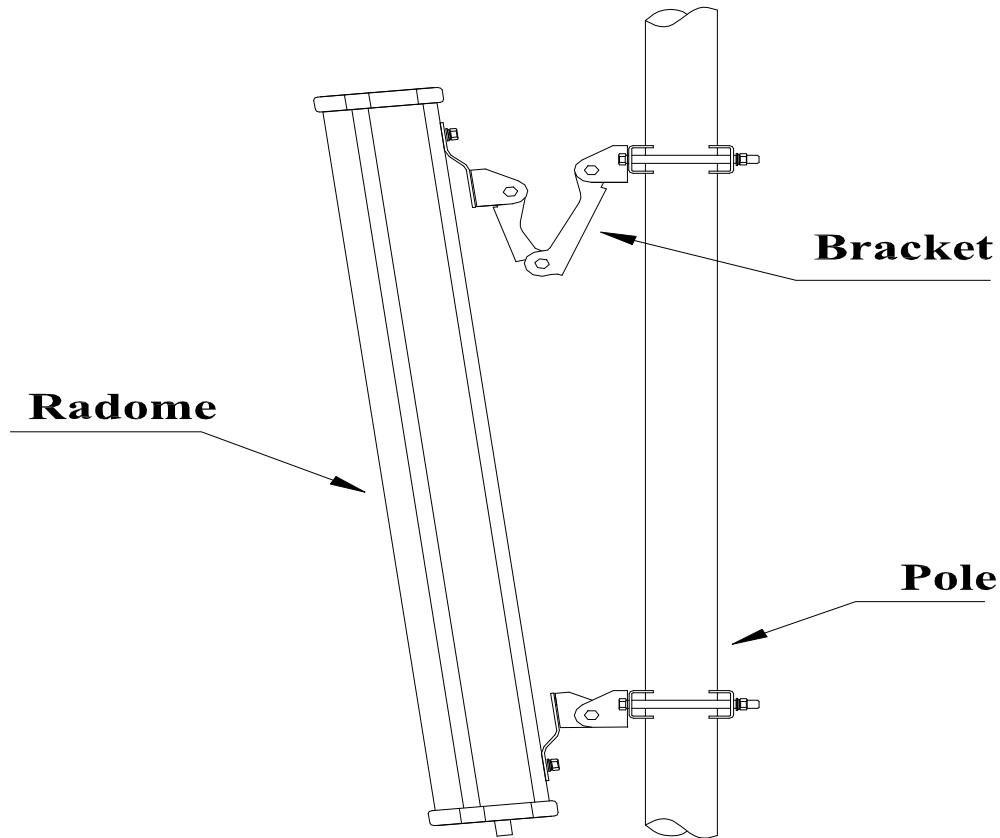
Fax: +86 - 769-22000020

Website: <http://xytx86.com>

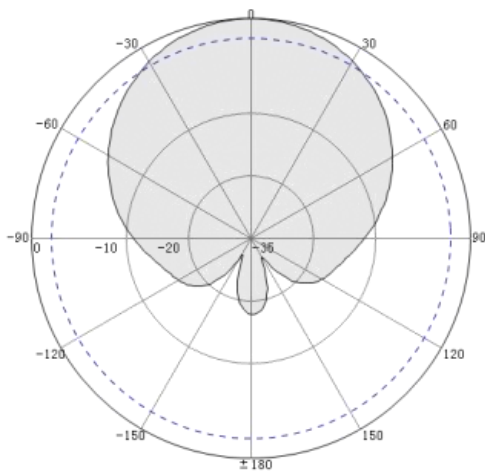


XingYue Communication Technology Co., Ltd.

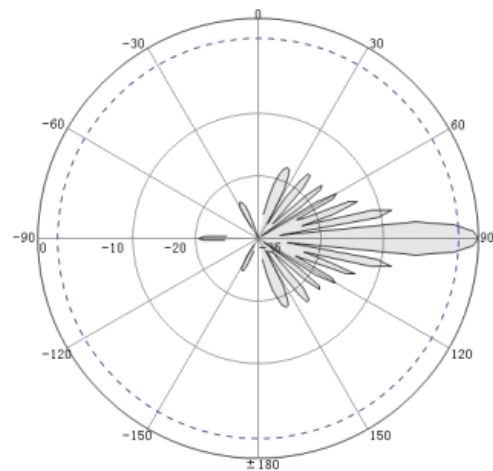
Installation Guide:



Directional Pattern:



Horizontal Pattern



Vertical Pattern