



# XingYue Communication Technology Co., Ltd.

**Product Name: Yagi Antenna with Radome**

**Product Model: XY224501**

## Electrical Specifications

Frequency Range	5150-5850MHz
Polarization Type	Vertical / Horizontal
Gain	15±1dBi
VSWR	≤1.5:1
Horizontal Beamwidth	26°±4°
Vertical Beamwidth	22°±4°
Front-to-back Ratio	≥16dB
Isolation	≥20dB
Input Impedance	50 Ω
Max Power	50 W
Lightning Protection	DC Ground

## Mechanical Specifications

Connector Type	2*N Female
Dimensions (L*W*H)	310*103*82 mm(12.2*4*3.23in)
Radiating Element Material	Aluminum
Reflector Material	Aluminum
Weight	0.42kg
Mounting Pole	Φ40~65mm
Operating Temperature	-40°C~60°C
Max Wind Velocity	200 km/h

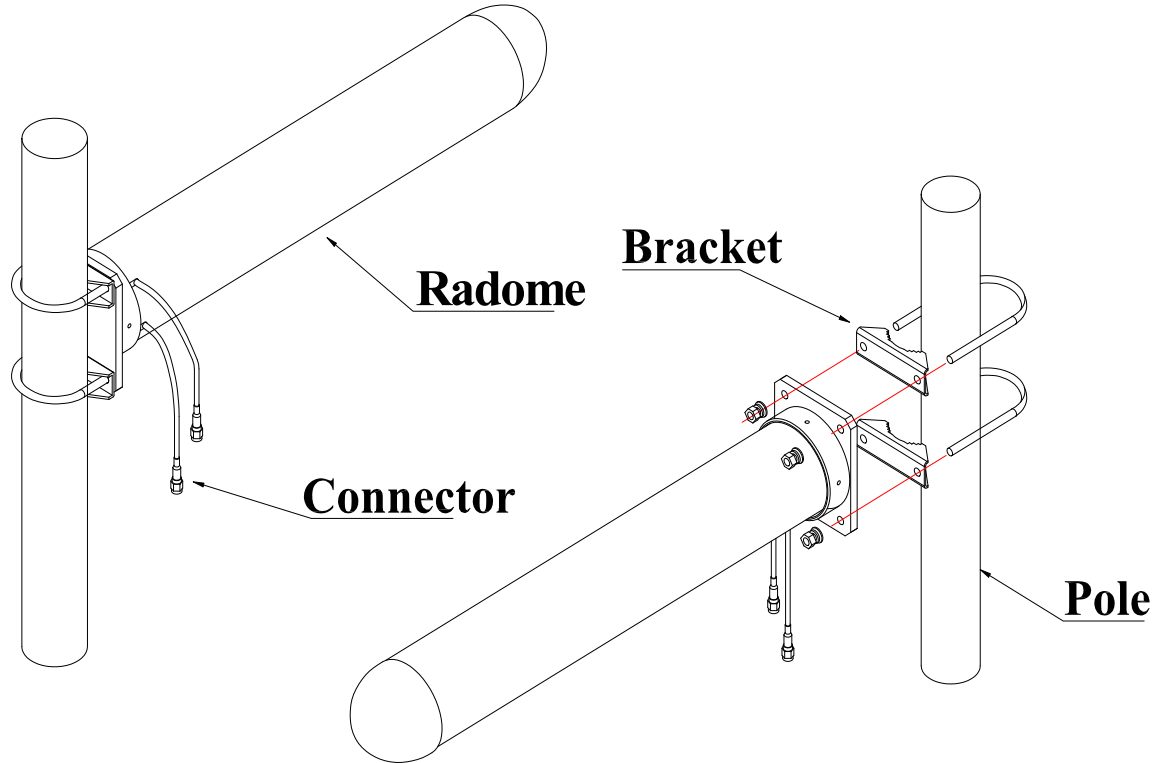


**Add:**No.11 GuangMing new RD, DongCheng area, DongGuan City,China  
**Tel:** +86 - 769-22333955 **Fax:** +86 - 769-2200020  
**E-mail:**xingyue@xytx86.com **Website:**<http://xytx86.com>

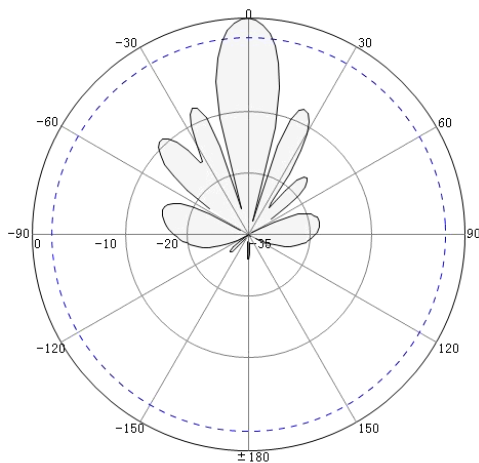


# XingYue Communication Technology Co., Ltd.

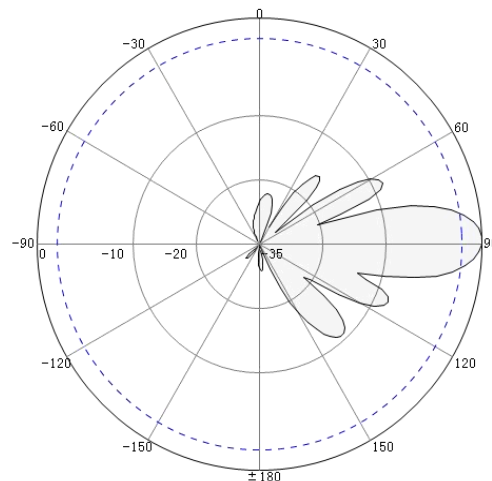
## Installation Guide:



## Directional Pattern:



Horizontal Pattern



Vertical Pattern