



# XingYue Communication Technology Co., Ltd.

**Product Name: LTE Fiberglass Omni Antenna**

**Product Model: XY113609**

Electrical Specifications			
Frequency Range	698-800MHz	800-960MHz	1710-2700MHz
Polarization Type	Vertical		
Gain	3±1dBi	3.5±1dBi	4.5±1dBi
VSWR	≤1.8:1	≤1.7:1	≤1.7:1
Horizontal Beamwidth	360°	360°	360°
Vertical Beamwidth	80° ±5°	70° ±5°	60° ±10°
Out of Roundness	±1.5 dB	±1 dB	±1 dB
Input Impedance	50 Ω		
Max Power	50W		
Lightning Protection	DC Ground		
Mechanical Specifications			
Connector Type	N Female		
Dimensions (D*H)	φ 63*210mm( φ 2.5*8.27in)		
Radiating Element Material	Aluminum		
Weight	0.65kg		
Radome Material	UABS		
Radome Color	White		
Mounting	wall mounting		
Operating Temperature	-40°C~60°C		

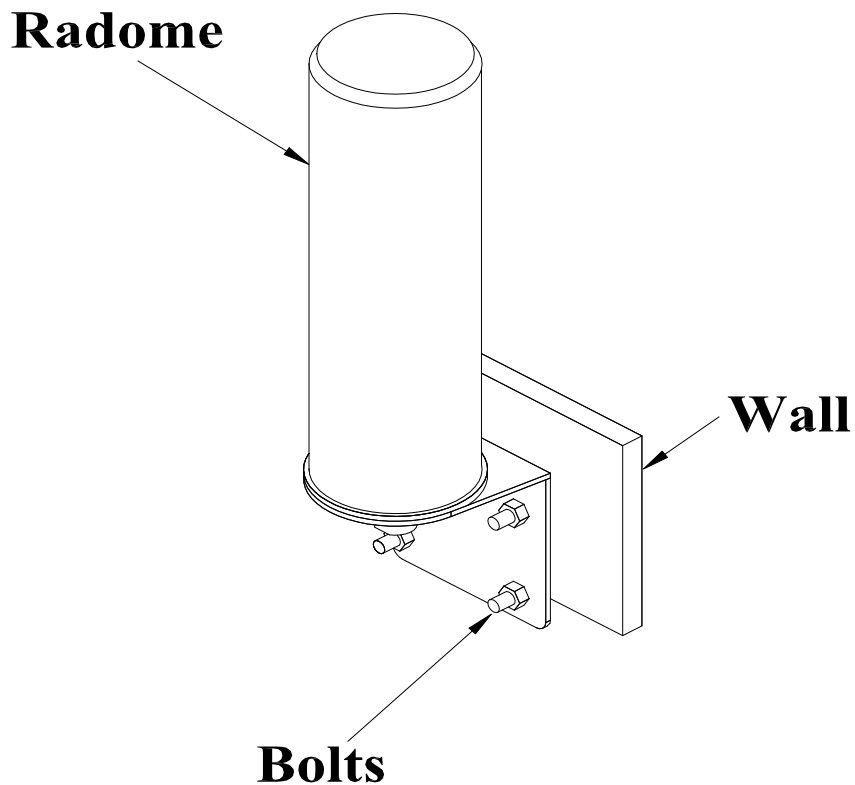


**Add:**No.11 GuangMing new RD, DongCheng area, DongGuan City,China  
**Tel:** +86 - 769-22333955  
**E-mail:**xingyue@xytx86.com

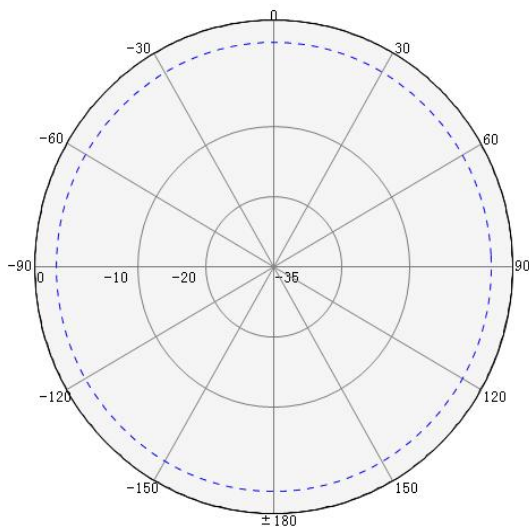
**Fax:** +86 - 769-22000020

**Website:**<http://xytx86.com>

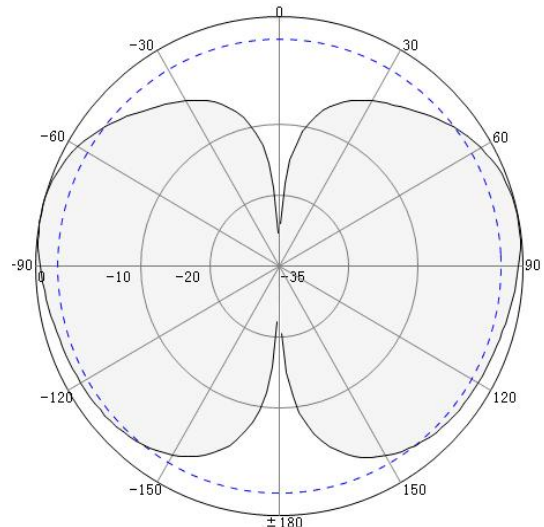
## Installation Guide:



## Directional Pattern:



Horizontal Pattern



Vertical Pattern